



ERIP Luncheon

Horizon Utilities Corporation Working For

***A Cleaner Environment,
Electricity Retrofit Incentives,
& Lower Operating Costs***

ELECTRICITY RETROFIT INCENTIVE PROGRAM

Plan on
ERIP



1. Background

2. Who Qualifies

3. Prescriptive Projects

4. Custom Projects

5. Incentive Payouts

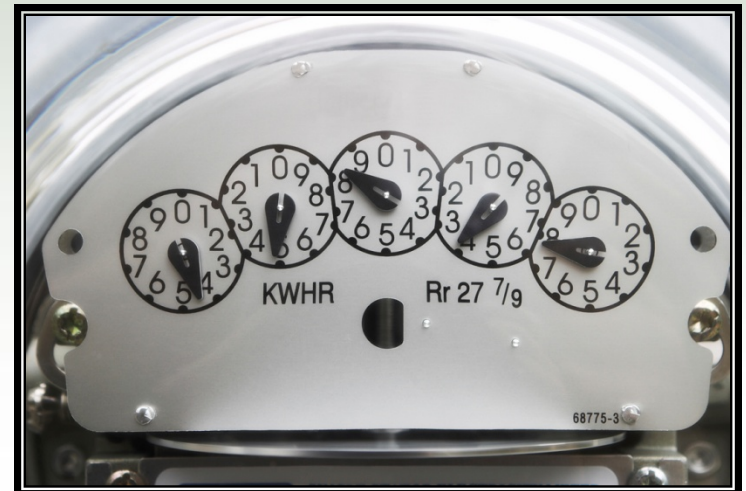
6. Applying for ERIP

7. Questions?





Benefits

- ❖ Provides Financial Incentives to encourage and support the installation of energy efficient improvement projects in Existing Buildings
- ❖ Your business lowers operating costs and is more competitive
- ❖ The electricity system has less load at peak demand



What This Means To You

	 100 W Incandescent	 25 W CFL	Annual Energy Savings	Lifetime Energy Savings (based on 10,000 h lifespan)
Annual Operating hrs/yr	2,320	2,320		
Annual Energy Usage (kWh/yr)	209	52	157	
kWh @ 8cents	\$16.72	\$4.16	\$12.56	\$60.00
kWh @ 10cents	\$20.90	\$5.20	\$15.70	\$75.00
kWh @ 12cents	\$25.08	\$6.24	\$18.84	\$90.00

*Source: OEB Total Resource Cost Guide, Section 5, Assumptions and Measures List September 8, 2005 - File: cdm_assumptionsmeasureslist_08092005.xls

Potential Energy Savings

No. of Lamps Retrofitted	¢ / kWh	Annual Savings
1	10¢	\$15.70
100	10¢	\$1,570
1000	10¢	\$15,700



What This Means To You

	2 - T12 75W (184W) 8' HO Lamps w/1 magnetic ballast	4 - T8 32W (112W) 4' Lamps w/EL ballast	Annual Energy Savings	Lifetime Energy Savings (based on 20,000h lifespan)
Annual Operating hrs/yr	4,000	4,000		
Annual Energy Usage (kWh/yr)	662.4	403.2	259.2	
kWh @ 8cents	\$52.99	\$32.26	\$20.73	\$115.20
kWh @ 10cents	\$66.24	\$40.32	\$25.92	\$144.00
kWh @ 12cents	\$79.49	\$48.38	\$31.11	\$172.80

*Source: OEB Total Resource Cost Guide, Section 5, Assumptions and Measures List September 8, 2005 - File: cdm_assumptionsmeasureslist_08092005.xls

Potential Energy Savings

No. of Lamps Retrofitted	¢ / kWh	Annual Savings
1	10¢	\$25.92
100	10¢	\$2,595
1000	10¢	\$25,920



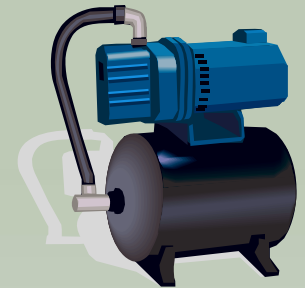
Who Qualifies?

- ❖ General Service customers of Horizon Utilities Corporation
- ❖ Tenants or owners of business premises supplied by Horizon Utilities Corporation
- ❖ Pre-approved projects that result in measurable reductions in electrical peak demand



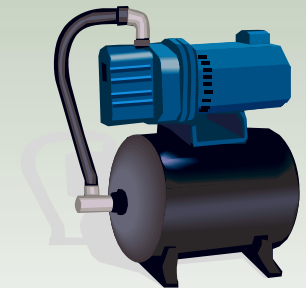
Prescriptive Projects

- ❖ Predefined technologies in lighting, A/C, motors, transformers and agri-business systems
- ❖ Incentive is a fixed \$ amount based on what equipment you install.
- ❖ Worksheets are provided for each prescriptive category



Prescriptive Projects

- ❖ Can apply for pre-approval or payment
- ❖ Strongly recommend pre-approval to ensure correct technologies are being used
- ❖ Must submit documentation supporting project details within 30 days of project installation completion



New Project Categories

- Food Services
 - ✓ Conversion to Gas Griddles or Fryers
- Service Hot Water
 - ✓ Solar Hot Water Collector
 - ✓ Drain Water Heat Recovery System
 - ✓ Non-Electric Hot Water Heaters
- Space Cooling
 - ✓ Ground Source Heat Pumps
 - ✓ Desiccant Dehumidifiers
 - ✓ Non Electric Driven or Absorption Chillers



Prescriptive Changes for 2009

- Major lighting list changes
 - ✓ Medium Bay T8s
 - ✓ Electronic Ballasts for MH & HID
 - ✓ Par CFLs added
 - ✓ Reduced CFL incentive
- Transformers no longer prescriptive
- Applications on Memory Stick at Booth

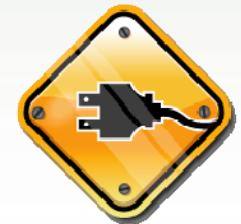


- ❖ Replacement of inefficient existing equipment
- ❖ Replacement of oversized existing equipment with new “right sized equipment”
- ❖ Introduction of new and efficient operation procedures and controls that result in sustained savings
- ❖ Addition of new technologies or products that improve the thermal performance of bldg envelope



Custom Projects

- ❖ Projects are evaluated on the improvement in power and energy performance
- ❖ Incentives are based on the level of improvement-minimum savings 5kW average peak demand
- ❖ Projects must be pre approved prior to project commitment-No retroactivity
- ❖ Now Incentive-lesser of **\$250/kW** saved or 50% of incremental project costs or amount required to top-up total government & utility incentive to 50% of total project cost



Determining kW Savings

- ❖ Base case kW – after project kW = gross kW savings
- ❖ Gross kW need to be adjusted to match expected operating conditions over a typical weekday
- ❖ Net kW (average on peak demand) savings result from averaging the gross kW savings over the OPA prescribed peak period
- ❖ Average on peak demand savings is multiplied by **\$250** to give total incentive



- ❖ Actual retrofit matches pre-approved application
- ❖ Evidence of implementation and verification of costs provided i.e., invoices
- ❖ Delivering kW savings on or before Dec 1, 2011
- ❖ Construction must be completed within 12 months of application approval date (cannot exceed 12 months)



- ❖ Visual inspection by Horizon Utilities Corporation or its agent
- ❖ Provide before and after digital photos for custom projects
- ❖ *Incentives based on*
 - Specific technologies (prescriptive projects)
 - Power and performance improvements (custom projects)



Recipe for Success

- ❖ All fields have to be filled out in application
- ❖ Include model #'s and manufacturer names of lamps, ballasts and fixtures (where applicable) on worksheets
- ❖ Manufacturer spec sheets and estimates/Invoices must accompany application
- ❖ Ensure “build-up” of kW savings estimate is simple to follow
 - ❖ 3 custom worksheets should align and have matching kW savings



Things to look out for



→ DON'T FORGET!

- ❖ If tenant or contractor, require letter from owner
- ❖ kW and kWh
- ❖ Custom calculation sheet – hours of operation match what happens in practice
- ❖ Assumed kW Savings



Applying for ERIP

- ❖ Visit <http://horizon.erip.ca/> for info and ERIP forms
- ❖ **Determine** if yours is a Prescriptive or Custom project
- ❖ **Complete** the appropriate application form and incentive worksheets for your project and specific technologies
- ❖ **Submit** the forms and supporting documentation to Horizon Utilities Corporation for evaluation. Provide all required information (including pre retrofit picture)
- ❖ **Install** upon approval.
- ❖ **Verify** by submitting proof of payment for approved work within 30 days of installation
- ❖ **Receive** incentive cheque



- ❖ Submission deadline for applications
December 31, 2010
- ❖ Project savings results deadline
December 1, 2011
- ❖ Improvements must remain => 36 months
- ❖ Projects must be completed within 12
months of approval





Questions?

Horizon Utilities, Brad Gallant,
ERIP Program Manager, 905-741-2047
brad.gallant@horizonutilities.com
erip@horizonutilities.com

EnerSpectrum Group

Web: www.EnerSpectrum.com

Phone: 905-939-8239 | 416-219-9976

